

# LED Spot

## For saunas and steam rooms

LED spots for use in saunas, infrared cabins, steam rooms and hammams. Available as RGB or warm white version. Elegant round-shape slim size housing with pre-mounted cable allows fast and easy installation.

### Features and benefits:

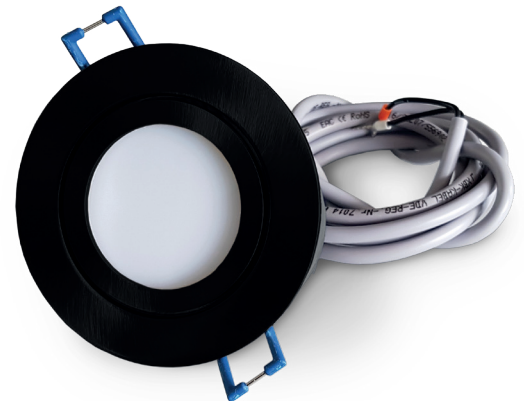
- Universal - suitable for saunas and steam rooms (IP65)
- RGB and warm white 3000 K version available.
- Dimmable (constant voltage type).
- Powerful, brilliant colours, homogeneous light surface.
- Simple, easy installation.
- Pre-mounted 2 m connection cable.
- Timeless design, brushed nickel and matt black finish.
- Robust slim-size metal housing - only 25 mm height.
- Up to 110°C heat resistant - great for saunas. With electronic overheating protection for each LED chip.
- Made in Germany quality by EOS

### Specifications:

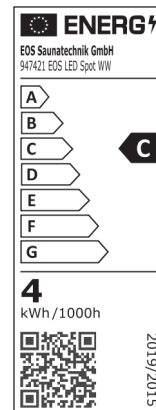
Power rating:	approx. 4 W
Voltage:	24 V DC
Colour:	RGB (red/green/blue and mixed colours) or Warm White (3000 K)
Connection:	low voltage power supply (SELV) as per DIN EN 60335-1
Housing:	Metal brushed nickel and matt black finish
Protection class:	IP65
Ambient temperature:	-10°C to 110°C
Size:	Ø84 x 25 mm Ø62 mm recess, installation depth 45 mm



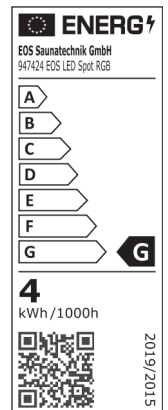
brushed nickel



matt black

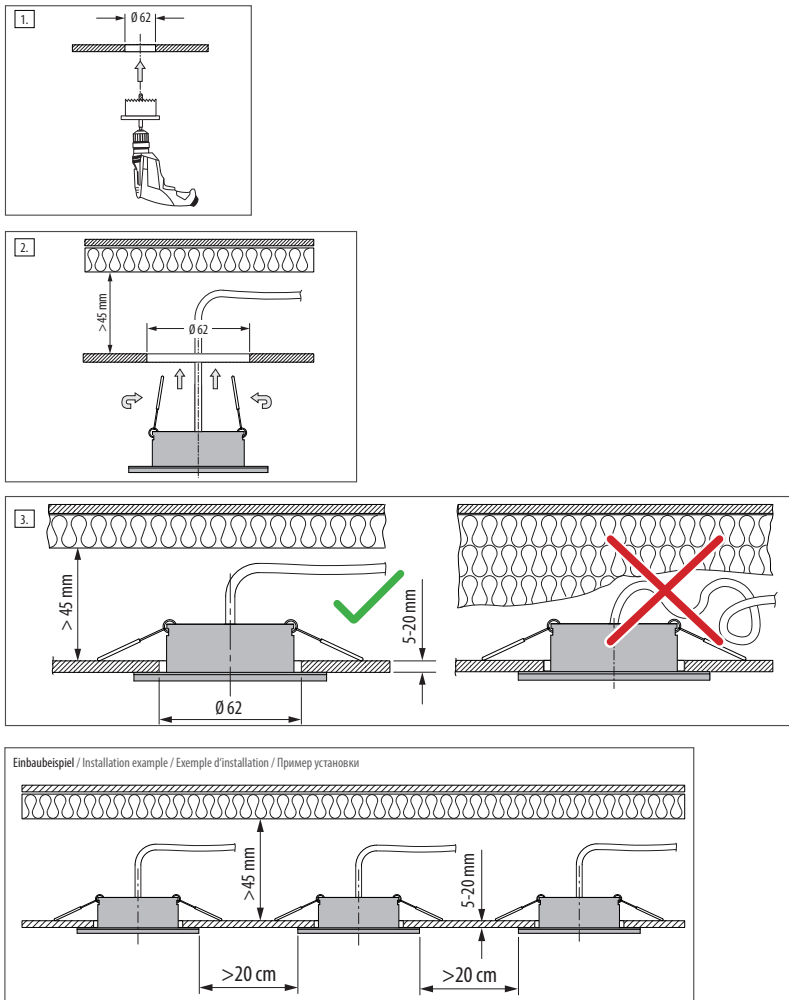


White light type



RGB type

## Installation



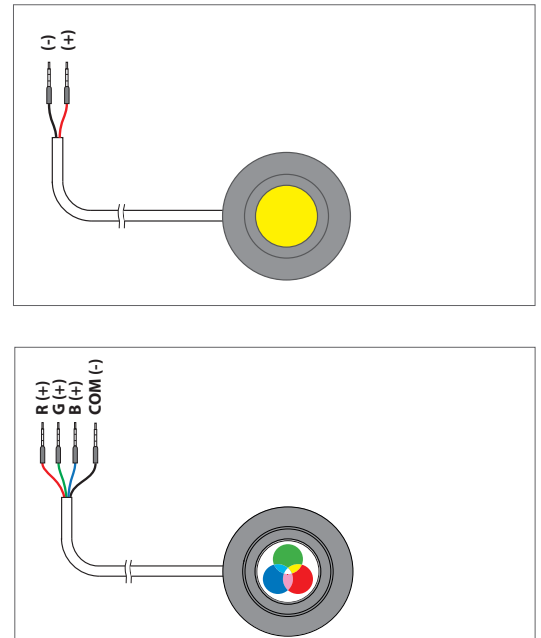
## Installation notes

Designed for use in saunas and steam rooms. Suitable for zones where the expected temperatures will not exceed 110°C.

Do not install above the sauna heater or within 50 cm range. Do not install within direct emission range of infrared emitters or above infrared emitters. Do not make serial connection. Make sure to observe the installation manual.

**Risk of fire by improper installation!**

## Connection



### **! WARNING**

#### **Risk of fire due to overload or short circuit.**

Do not connect LED spots in chain, as this will cause overload. Make sure to observe polarity. Do not use LED spots if the housing or connection cables are damaged.

Item no.	Type	Housing Design	Power	Electric connection	Size	Ambient temperature	Protection class
94 7424	LED Spot RGB	Brushed nickel	4 W	24 V DC	Ø84 x 25 mm	-10°C bis 110°C	IP65
94 8830		Matt black					
94 7421	LED Spot white	Brushed nickel					
94 8827		Matt black					